

MÉDECINS DU MONDE 世界医生组织 DOCTORS OF THE WORLD منظمة أطباء العالم LÄKARE I VÄRLDEN MEDICI DEL MONDO ΓΙΑΤΡΟΙ ΤΟΥ ΚΟΣΜΟΥ DOKTERS VAN DE WERELD MÉDICOS DO MUNDO MÉDICOS DEL MUNDO 世界の医療団 ÄRZTE DER WELT दुनिया के डॉक्टर MÉDECINS DU MONDE 世界医生组织 DOCTORS OF THE WORLD 世界医生组织 DOCTORS OF THE WORLD منظمة أطباء العالم LÄKARE I VÄRLDEN MEDICI DEL MONDO ΓΙΑΤΡΟΙ ΤΟΥ ΚΟΣΜΟΥ DOKTERS VAN DE WERELD MÉDICOS DO MUNDO MÉDICOS DEL MUNDO 世界の医療団 ÄRZTE DER WELT दुनिया के डॉक्टर MÉDECINS DU MONDE 世界医生组织 DOCTORS OF THE WORLD منظمة أطباء العالم LÄKARE I VÄRLDEN MEDICI DEL MONDO ΓΙΑΤΡΟΙ ΤΟΥ ΚΟΣΜΟΥ DOKTERS VAN DE WERELD MÉDICOS DO MUNDO MÉDICOS DEL MUNDO 世界の医療団 ÄRZTE DER



# What is happening in Palestine?

A timeline of events, how it is effecting  
the Palestinian community and our  
response

May 2021

MÉDECINS D  
LÄKARE I VÄ  
KTERS VAN D  
VÄRLDEN ME  
生组织 DOCTO



OF THE WORLD العالم منظمة LÄKARE I VÄRLDEN MEDICI DEL MONDO ΓΙΑΤΡΟΙ ΤΟΥ ΚΟΣΜΟΥ DOKTERS VAN DE WERELD MÉDICOS DO MUNDO MÉDICOS  
S 世界医生组织 MÉDECINS DU MONDE 世界医生组织 DOCTORS OF THE WORLD العالم منظمة LÄKARE I VÄRLDEN MEDICI DEL MONDO ΓΙΑΤΡΟΙ ΤΟΥ ΚΟΣΜΟΥ DO  
ÉDICOS DEL MUNDO 世界の医療団 ÄRZTE DER WELT दुनिया के डॉक्टर MÉDECINS DU MONDE 世界医生组织 DOCTORS OF THE WORLD العالم منظمة LÄKARE I VÄ  
KOSMΟΥ DOKTERS VAN DE WERELD MÉDICOS DO MUNDO MÉDICOS DEL MUNDO 世界の医療団 ÄRZTE DER WELT दुनिया के डॉक्टर MÉDECINS DU MONDE 世界医  
织 LÄKARE I VÄRLDEN MEDICI DEL MONDO ΓΙΑΤΡΟΙ ΤΟΥ ΚΟΣΜΟΥ DOKTERS VAN DE WERELD MÉDICOS DO MUNDO MÉDICOS DEL MUNDO 世界の医療団 ÄRZ

# PALESTINE SHRINKING EXPANDING ISRAEL

1918



UNDER OTTOMAN  
RULE, ZIONIST  
ORGANISATIONS  
INCLUDING  
THE JEWISH NATIONAL  
FUND BEGIN TO MAKE  
**LAND PURCHASES  
THROUGHOUT  
PALESTINE**  
FOR JEWISH  
SETTLEMENT.

1947



PRIVATISATION  
OF LAND UNDER  
THE BRITISH  
MANDATE  
**ACCELERATES  
ITS TRANSFER  
AND SALE  
TO ZIONIST  
ORGANISATIONS,**  
AND THE  
DISPLACEMENT  
OF PALESTINIAN  
INHABITANTS.

1960



FOLLOWING THE  
**FORCED  
DISPLACEMENT  
[NAKBA] OF OVER  
750,000  
PALESTINIANS**  
1948, THE NEW  
STATE OF ISRAEL  
ENACTS LAWS  
**CONFISCATE THE  
VAST MAJORITY  
OF PALESTINIAN  
LANDS.**

2017



SINCE OCCUPYING  
THE WEST BANK  
AND GAZA IN  
1967, ISRAEL HAS  
UNILATERALLY  
DECLARED **TENS  
OF THOUSANDS  
OF HECTARES OF  
SO CALLED 'STATE  
LAND' FOR  
ISRAELI  
SETTLEMENTS.**

## SOURCES

Text based on:  
BACH, 2000 *Land Ownership in Palestine/Israel 1920-2000*.  
BACH, 2010 *Living Land: Population Transfer And The West Bank in The Mapsh*.  
8 February 2010. *By Hook And By Crook: Israeli Settlement Policy In The West Bank*.

Maps adopted from:  
Halek Shalman, 2010. *Atlas of the Conflict: Israel-Palestine*.  
8 February 2014. *Map of the West Bank, Settlements and the Separation Barrier*.

Light blue: Palestinian Land  
Dark blue: Zionist Settlements

VISUALIZING PALESTINE

WWW.VISUALIZINGPALESTINE.ORG, MAY 2015  
SHARE AND DISTRIBUTE FREELY, CREATIVE COMMONS BY-NC-ND 3.0 LICENSE.

@visualizingpalestine  
fb.com/visualizingpalestine



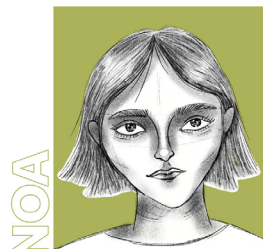


## 'The battle for Jerusalem'

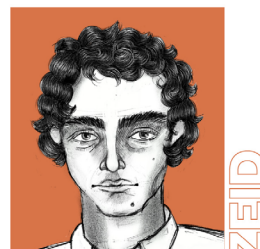
- » Jerusalem has long been at the heart of the Palestinian struggle for freedom
- » Escalations of violence when the status quo of the city is being challenged (e.g. barriers to access Al Aqsa, visits to Al Aqsa by Israeli parliamentarians, opening of US embassy in 2018)
- » The recent Israeli election saw a rise in right wing extremists who support segregationist policies, settlement expansion and prohibiting home sales to Palestinians.
- » Human Rights Watch report released in April 2021 with legal analysis that there is an apartheide regime



## BORN UNEQUAL EAST JERUSALEM



**JEWISH CITIZEN OF ISRAEL**  
BORN IN EAST JERUSALEM  
(SETTLEMENT)



**PALESTINIAN RESIDENT**  
BORN IN EAST JERUSALEM

### IS MY LEGAL STATUS IN JERUSALEM SECURE?

**YES**

You're an Israeli citizen and it's government policy to maintain a Jewish majority in the city

**NO**

Just like foreigners who move to Israel, you're a resident, a conditional and revocable status. You can apply for citizenship, but you're unlikely to get it

### CAN I MOVE ABROAD FOR A FEW YEARS AND COME BACK?

**YES**

Whenever you decide to move back to Jerusalem, you'll be welcome

**MAYBE NOT**

You can leave, but if you stay away too long, your residency could be revoked, leaving you without legal status

### WILL I KEEP MY LEGAL STATUS IF I MOVE TO OTHER PARTS OF THE WEST BANK?

**YES**

You can move to an Israeli settlement in the West Bank. Your legal status is secure, regardless of where you live

**MAYBE NOT**

If Israeli authorities determine that you no longer "maintain a connection" to Jerusalem, you might lose your residency

### CAN I EASILY MOVE TO A NEW HOME IN EAST JERUSALEM?

**YES**

You should have no problem moving into a settlement

**MAYBE NOT**

It's virtually impossible to obtain a building permit, and built-up Palestinian areas are already overcrowded

MÉDECINS D  
LÄKARE I VÄ  
KTERS VAN D  
VÄRLDEN ME  
生组织 DOCTO



OF THE WORLD العالم منظمة أطباء LÄKARE I VÄRLDEN MEDICI DEL MONDO ΓΙΑΤΡΟΙ ΤΟΥ ΚΟΣΜΟΥ DOKTERS VAN DE WERELD MÉDICOS DO MUNDO MÉDICOS  
S 世界医生组织 MÉDECINS DU MONDE 世界医生组织 DOCTORS OF THE WORLD العالم منظمة أطباء LÄKARE I VÄRLDEN MEDICI DEL MONDO ΓΙΑΤΡΟΙ ΤΟΥ ΚΟΣΜΟΥ DO  
ÉDICOS DEL MUNDO 世界の医療団 ÄRZTE DER WELT दुनिया के डॉक्टर MÉDECINS DU MONDE 世界医生组织 DOCTORS OF THE WORLD العالم منظمة أطباء LÄKARE I VÄ  
KOSMΟΥ DOKTERS VAN DE WERELD MÉDICOS DO MUNDO MÉDICOS DEL MUNDO 世界の医療団 ÄRZTE DER WELT दुनिया के डॉक्टर MÉDECINS DU MONDE 世界医  
织 LÄKARE I VÄRLDEN MEDICI DEL MONDO ΓΙΑΤΡΟΙ ΤΟΥ ΚΟΣΜΟΥ DOKTERS VAN DE WERELD MÉDICOS DO MUNDO MÉDICOS DEL MUNDO 世界の医療団 ÄRZ





## 22 April 2021

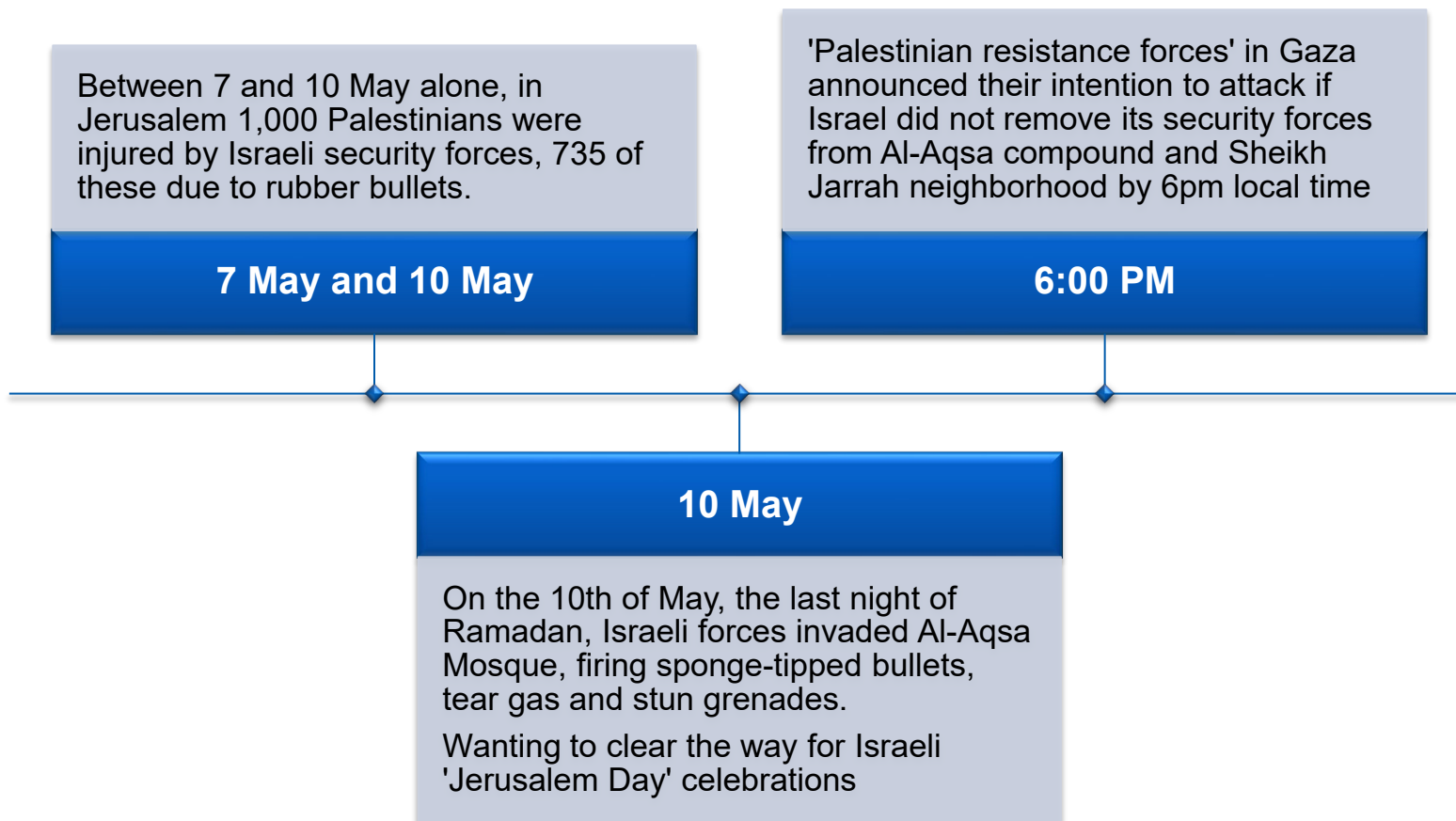
6

### » On 22 April 2021

- Hundreds of ultra-right wing Israelis marched through Jerusalem chanting 'Death to Arabs' and attacking Palestinians.
- Police responded with brutal force on Palestinian counter-protest.
- Police also targeted journalists who were present.
- 12 Palestinians were hospitalised, with dozens more injured and arrested.









## Barriers to Health Care responding in Jerusalem during this time

8



- » PCRS faced significant impediments to its work in Jerusalem
- A request to transfer ambulances from West Bank to Jerusalem was denied
- Paramedic crews were prevented or delayed in accessing injured
- PCRS medics were targeted with Skunk water, tear gas, rubber bullets.
- Two ambulances damaged, one staff member also beaten and briefly detained.



MÉDECINS D  
LÅKARE I VÅ  
KTERS VAN D  
VÄRLDEN ME  
生组织 DOCTO



OF THE WORLD العالم منظمة LÅKARE I VÄRLDEN MEDICI DEL MONDO ΓΙΑΤΡΟΙ ΤΟΥ ΚΟΣΜΟΥ DOKTERS VAN DE WERELD MÉDICOS DO MUNDO MÉDICOS  
S 世界医生组织 MÉDECINS DU MONDE 世界医生组织 DOCTORS OF THE WORLD العالم منظمة LÅKARE I VÄRLDEN MEDICI DEL MONDO ΓΙΑΤΡΟΙ ΤΟΥ ΚΟΣΜΟΥ DO  
ÉDICOS DEL MUNDO 世界の医療団 ÄRZTE DER WELT दुनिया के डॉक्टर MÉDECINS DU MONDE 世界医生组织 DOCTORS OF THE WORLD العالم منظمة LÅKARE I VÄ  
KOΣMOY DOKTERS VAN DE WERELD MÉDICOS DO MUNDO MÉDICOS DEL MUNDO 世界の医療団 ÄRZTE DER WELT दुनिया के डॉक्टर MÉDECINS DU MONDE 世界医  
织 LÅKARE I VÄRLDEN MEDICI DEL MONDO ΓΙΑΤΡΟΙ ΤΟΥ ΚΟΣΜΟΥ DOKTERS VAN DE WERELD MÉDICOS DO MUNDO MÉDICOS DEL MUNDO 世界の医療団 ÄRZ





## Gaza

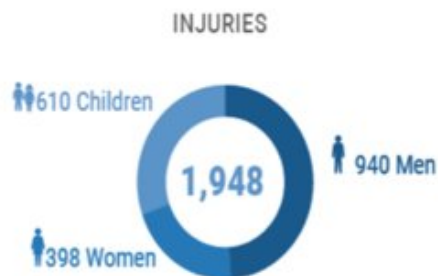
10

- » The Israeli attacks on Gaza started May 10th and lasted 11 days
- » Even before this recent escalation Gaza was 'unlivable'
- » 91, 000 people displaced
- » At least 30 health facilities damaged
- » Water and electricity severely affected
- » 54 education facilities damaged
- » Serious Protection concerns for health care, and increasing barriers for access to health care





## PALESTINIAN CASUALTIES



### FAMILY-SPECIFIC FATALITIES



### FATALITIES BY DAY (FROM 12:00 TO 12:00)



## FATALITIES BY GOVERNORATE



**GAZA STRIP: ESCALATION OF HOSTILITIES 10-21 MAY 2021**



Source: UN-OCHA  
May 22nd 2021 at 18:00



IMEU

Israel has **destroyed** a number of  
buildings including:

- The Al-Jalaa tower  
12-story building which housed the offices of the Associated Press  
and Al Jazeera.
- The MSF building  
MSF provides trauma and burn treatment to Palestinians in Gaza.
- The Ministry of Health building
- The PCRf office  
The PCRf provided free medical treatment to children in Palestine.
- The only COVID-19 testing lab  
The lab was damaged by Israeli attacks on Al Wehda street which  
means there is no way of detecting new cases.
- Rosary Sisters School
- Gaza's largest Bookshop  
and the main publishing house of Samir Mansour.

Israel has destroyed  
over **500** homes.

More than **50,000**  
Palestinians are now  
homeless.

Some of Gaza's **essential**  
**workers** have been killed in  
the bombings:

- Dr. Mouin Al-Aloul  
Gaza's top neurologist
- Dr. Ayman Abu Al-Ouf  
The head of Coronavirus response  
at Gaza's biggest hospital
- Rajaa Abu Al-Ouf  
Psychologist and social worker





## Impact on Health in Gaza

13

### » Trauma and Emergency Needs

- Blast injuries
- COVID-19 major risk
- Damage/destruction of health facilities affecting functioning
- Public health - ↑risk of waterborne disease
- Electricity outages affecting clean water and WASH functioning

### » Access barriers in Gaza:

- Erez/Beit Hanoun remains closed for patients and referrals
- Abu Salem/Kerem Shalom checkpoint remains closed for supplies
- Damage to roads obstructing ambulance access to main hospital







## Impact on Mental Health in Gaza

14

- As an occupied population Gaza has some of the highest rates of mental health conditions. (68.9% adolescents-PTSD, 40% moderate to severe levels of depression, 94.9% anxiety)
- **Not resilience but adaptation to a stressful environment**
- The percentage of children in Palestine is 45.3% of the population (43.4% in the West Bank and 48.0% in Gaza Strip).
- Many of them lived and have lived under a situation of constant stress and threat. **Children the age of 13 and under have lived through 4 wars and whole life under blockade.**
- During bombing many parents related situation of panic, fear, somatic reactions, paralysis and one adolescent commit suicide.
- Gaza's population lacks mental health professionals.





## In the West Bank

15

» 29 fatalities: 4 children, 1 woman

### Several Palestinians killed by Israeli fire in West Bank protests

Israeli forces injure more than 500 Palestinians in wave of West Bank protests against Israel's bombardment of Gaza.



» 7200 injured: 719 with live ammunition, 1578 to Emergency Departments

» 89 attacks on health care have occurred in the West Bank, with beating, injury, and arrest of health workers; damage to ambulances; obstruction to access; and incursion of health facilities.



## MDM Response Plan

16

### Acute Emergency Phase

- » Procurement of medical drugs needed for treatment in the ER.
- » Provide immediate support to Palestinians in Gaza through mobile units in partnership with PMRS.
- » Advocacy

### Recovery Phase

- » Rehabilitate emergency rooms in primary care centers and train medical personnel to ensure timely and quality response to patients.
- » Community awareness raising on mental health and COVID-19
- » Continued Advocacy



## Advocacy

17



- » Statements, press release and videos reacting to events
- » Letter to UN security council on access to health and attacks on health care
- » Working with other French NGOs on advocacy at French, EU level
- » Joint initiatives with other chapters, clusters and advocacy working groups
- » Challenging root causes of inequality, oppression in Palestine which lead to barriers to right to health
- » Calling for an end of the blockade on Gaza and occupation of Palestine



## Thank you for listening We welcome your questions

*And when there's a 'ceasefire',  
please don't forget about us.  
We are still occupied. Still  
under Apartheid. Still under  
brutal colonial control. Our  
houses are still taken away.  
And our children are still  
imprisoned. And Gaza will  
remain an open-air-prison.  
And people will still die in  
silence. Please keep fighting  
for us. Continue to use your  
voice. When ours is silenced.*

